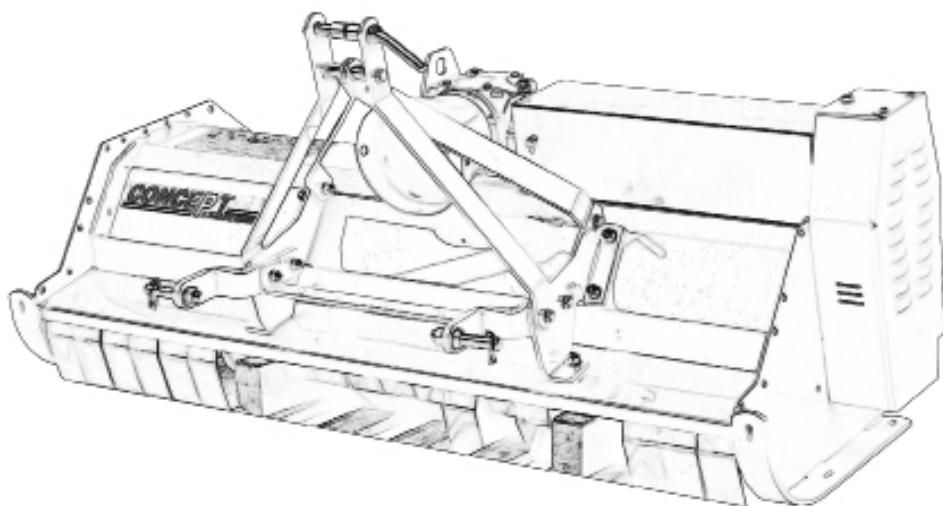


CONCEPT **PERUGINI**

FLAIL MOWERS



INSTRUCTION BOOK

Manufactured by
CONCEPT PERUGINI S.R.L.

Via Dell'Artigianato, 11-15
47014 Meldola (FC)
Italia

TEL.: +39 0543494602

FAX: +39 0543 494727

www.conceptagri.com
info@conceptagri.com



CONCEPT PERUGINI

**CONCEPT PERUGINI S.R.L. RESERVES THE RIGHT TO MODIFY THEIR
PRODUCTS WITHOUT PRIOR NOTICE AND THE COMMITMENT TO UPDATE
THIS MANUAL**

INDEX

Introduction	3
Instruction Manual.	4
Identification	5
Before operation	5
Safety	5
Symbols	5
General Safety Instruction	7
Operator's Prerequisites.	7
Work Clothing	7
Attaching the machine to the Tractor	8
PTO Shaft.	8
Working Depth.	8
Side Shift	9
In the Field	10
Road Transport	10
Maintenance.	10
CT Belt Adjustment	12
XT YT Belt Adjustment	12
Storage	13
Spare Parts.	13
Warranty	14

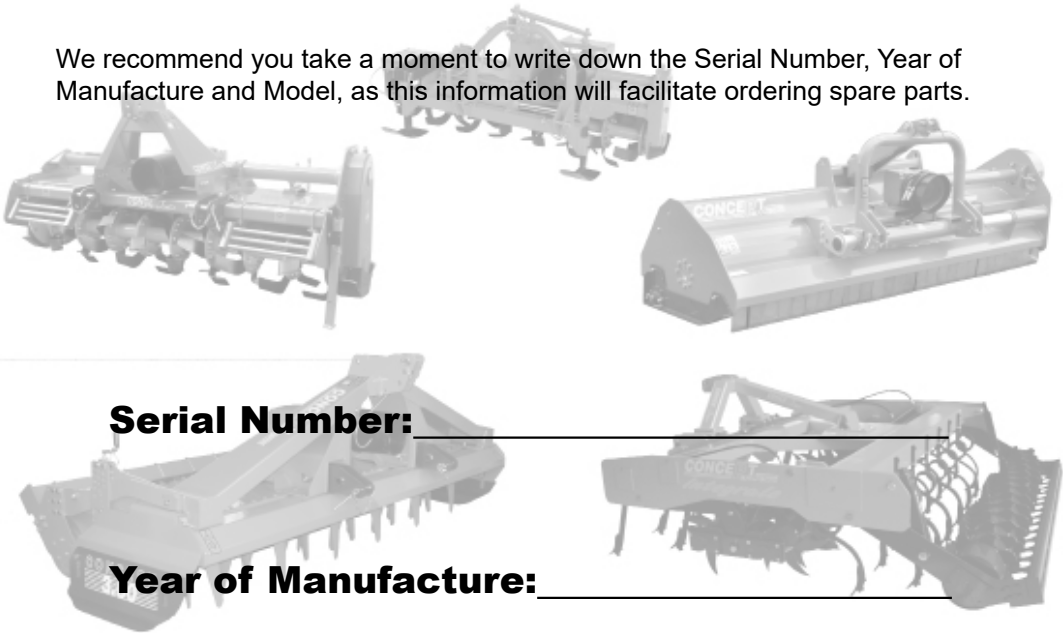
Introduction

Concept Perugini S.R.L would like to thank you for purchasing this Flail mower and offer their support and assistance throughout its productive life.

We strongly recommend that this booklet is read and understood before using your new machine, and that regular maintenance is carried out as described further in the booklet. If any doubts arise then don't hesitate to contact your local dealer or the company via the options provided on the front page or via Facebook @ Concept Perugini.



We recommend you take a moment to write down the Serial Number, Year of Manufacture and Model, as this information will facilitate ordering spare parts.



Serial Number: _____

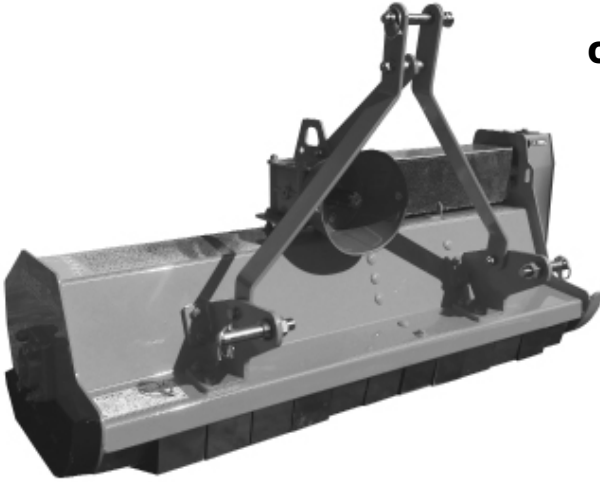
Year of Manufacture: _____

Model: _____

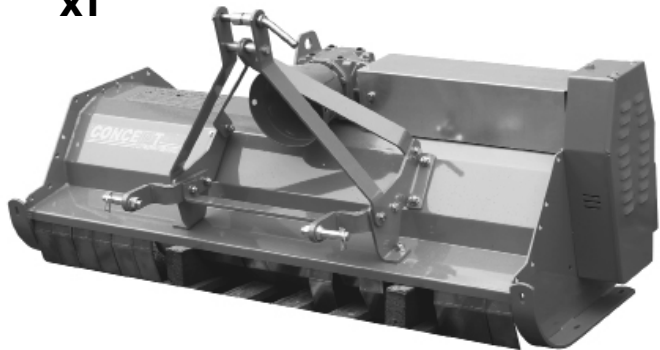
Instruction Manual

The aim of this manual is to help you (the user) understand how to use and how to maintain the machinery. This booklet covers the following models : **CT XT YT**

CT



XT



YT



Identification

The identification plate, attached to the machine shows the following information:

CONCEPT		CE	
47014 MELDOLA - (PO) - ITALIA			
1 ANNO DI FABBRICAZIONE	20 MANUFACTURE YEAR		
2 ANNÉE DE FABRICATION	20 DE LAJOUR		
3 N° DI IMMATRICOLA	40 SERIAL NUMBER		
3 NUMÉRO DE MATRICULE	40 FABRIKNUMMER		
1 MODELLO	20 TYPE	3 TYPE	40 MODELLEERIE
KW	HP	min ⁻¹	

- Manufacturer's Name
- CE mark
- Year of production
- Serial number
- Recommended tractor horsepower
- Overall weight
- P.T.O. speed and direction of rotation

These data are very important in order to check the compatibility between the machine and the tractor and when ordering spare parts

Before operation

At the factory each machine is carefully inspected to guarantee proper functioning. In addition, the dealer, before delivering the machine should have carried out a pre delivery inspection. However as a precaution measure check:

- Oil level in the gearbox
- Grease all those components provided with grease nipples
- Air pressure in the tractor's tyres, length of lift arms
- Tractor PTO speed to match the machine transmission speed

Safety

Symbols

In this booklet three different symbols are used to highlight danger levels or important information



DANGER

To draw the operator's attention to situations which could endanger his or other people safety.



CAUTION

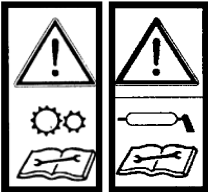




To draw the operator's attention to situations which could affect the machine performances but not his or other people safety.



IMPORTANT

To draw the operator's attention to situations which do not affect the machine performances and his or other people safety.

It is important to comply with the instructions given by the safety stickers, which must always be on the machine. If new ones are required, contact your dealer.

	SYMBOL	DESCRIPTION
1		<p>Before operation, adjusting or servicing the machine, it is important that each operator carefully reads the following instructions. Servicing lubrication etc. should be carried out with the engine stopped, the brakes applied and locked and the starter key removed.</p>
2		<p>Anybody who is near the machine when working, must keep at a safe distance. During operation keep away from rotating parts and PTO shaft. Do not remove safety guards whilst the machine is working or with engine running.</p>
3		<p>Danger of injury to lower body parts. Anybody who is near the machine when working must keep a safe distance at all times.</p>
4		<p>Danger of injury to limbs. Anybody who is near moving parts must be aware of where his body is in relation to the machine and keep at a safe distance. Do not remove safety guards.</p>
5		<p>Any servicing should be carried out with the tractor off and the correct parking procedures should be followed out as advised by the manufacturer. Should the machine need to be raised it should be supported securely.</p>



When lifting the machine always use the appropriate lifting gear and always use the lifting points indicated by the yellow and black stickers as shown in picture.

General Safety Instruction

- During operation keep away from rotating parts and PTO shaft, do not remove safety guards during operation or with the engine running.
- Servicing should be carried out with the engine stopped, the brakes applied and locked and the started key removed. Once the machine is raised do not work underneath unless supported securely.
- When travelling on the public road disconnect the PTO shaft and carefully follow the traffic regulations of your country.
- Always lift the machine from the lifting points.
- The operator should be experienced and in good health in order to avoid injury to his person and others.
- The operator must wear the correct safety garments.
- Do not work when dark unless suitable lighting is available

Operator's Prerequisites

To avoid danger to himself and others, the operator must be:

- **Physically sound**
- **Mentally sound**
- **Trained**

We advise that the operator read and understand this booklet before using the machinery. If there are any doubts then contact your dealer or **CONCEPT PERUGINI S.R.L**

Work Clothing

The operator must wear the following:

- Working gloves
- Overalls of appropriate size
- Working boots
- Protective glasses
- Protective helmet

ALWAYS MAKE SURE THE TRACTOR IS TURNED OFF, P.T.O IS DISENGAGED AND MACHINE IS MADE SAFE

Attaching the machine to the Tractor

Concept Perugini Flail toppers can be linked up to any tractor with a category 1 three point linkage.

Read the tractor's instruction manual before attempting to attach the machine to the tractor.

- Adjust the width of the tractor arms to match the lower brackets on the machine
- On a flat surface reverse the tractor up to the machine
- Firstly attach the lower links and do the necessary adjustments to limit sideways movement
- Lengthen and attach the top link in order to have the machine parallel to the ground once attached
- **Remember** to fit all the locking pins and that the machine is safely secured to the tractor

PTO Shaft

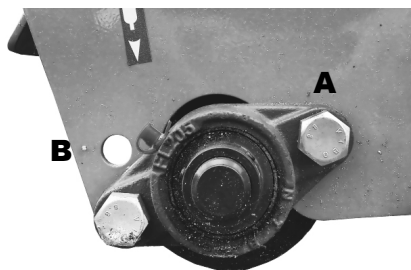
If necessary, cut the PTO shaft to the right length following the shaft manufacturer instructions.

When attaching the PTO shaft to the machine and tractor make certain that if the PTO shaft is fitted with an overrun clutch this must be installed on the implement. When connecting to the tractor verify that the locking pin is correctly located and secure in place. Before use make sure all the chains and guards are correctly fitted.

Working Depth

The height of the machine from the ground is controlled by the rear roller, skids and top link. Before using the flail mower make sure that the flails do not hit the ground, this will result in extreme wear will damage the rotor.

Always adjust the top link to keep the machine parallel to the ground when adjusting the height of the rear roller.

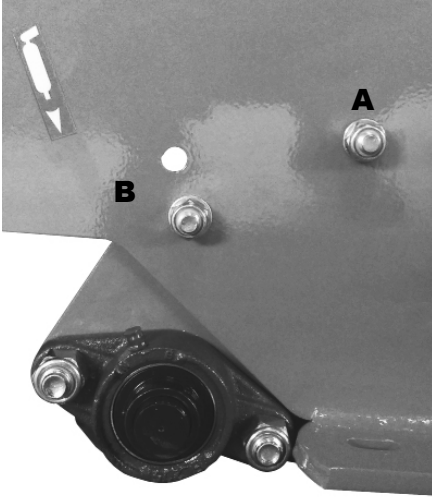


CT

The working depth is set by altering the position of the rear roller support.

To do this:

- Slacken bolt **A**
- Remove and reposition the support in **B**
- Tighten all bolts
- Repeat for both sides



XT YT

The working depth is set by altering the position of the rear roller supports.

- Slacken **A**
- Remove **B** and reposition the support
- Tighten all bolts
- Repeat for both sides

Side Shift



The **YT** comes with either mechanical or hydraulic side shift.

To use the hydraulic side shift connect the hoses to the double acting spool valve on the tractor.

Keep all moving parts well lubricated to minimise wear.

When in the field always lift the machine off the ground before operating the side shift, to not do so will strain the machine and will cause breakage.

In the Field

Once the machine has been attached to the tractor, adjusted and inspected then it can be operated in the field.

- Lower the machine to approximately 10 cm from the ground.
- Engage the tractor PTO and slowly increase the speed to 540 rpm.
- Lower the machine to the ground, engage a forward moving gear and commence forward motion.

Always drive in a straight line, when turning lift the machine off the ground to avoid straining the parts in contact with the ground.

IF THE MACHINE IS PROVIDED WITH AN OPENING TAILGATE, THIS CAN BE OPENED ONLY WITH THE MACHINE STOPPED. FOR NO REASON CAN THE MACHINE BE USED IN THE FIELD WITH THE TAILGATE OPEN.

Road Transport

When transporting on the road make sure to disconnect the PTO, if the machine is fitted with wheels then fold them in by relocating the pin. Carefully follow the traffic regulations of your country.

Maintenance

The maintenance for the Concept Perugini flail mowers is very straight forward.

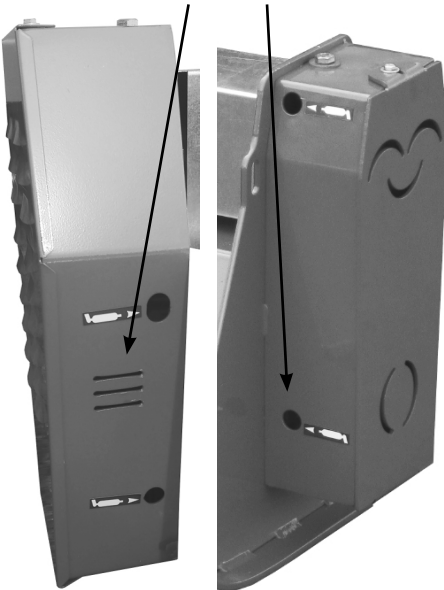
Lubrication

Every 10 working hours:

Grease the side shift sliding parts with **Agip 33/FD** or equivalent

Unless there are any leaks then the gearbox oil does not need to be changed or topped up.

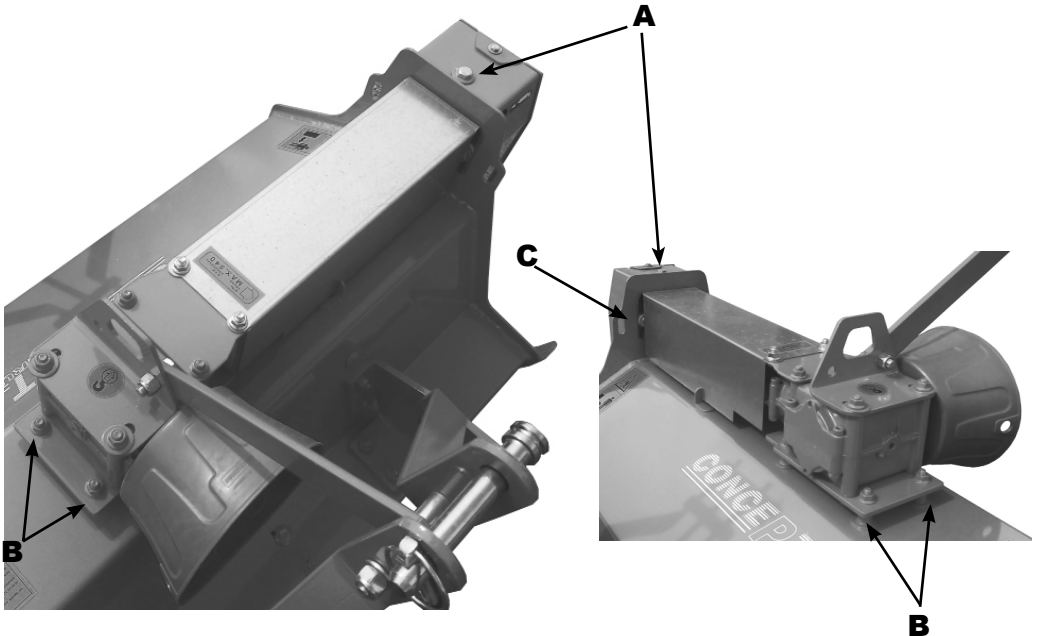
Belt tension observation slot



Transmission

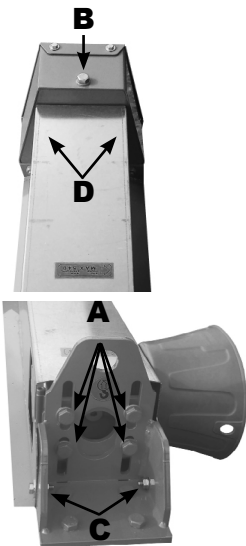
The transmission on all Concept Perugini flail mowers is belt driven. After the first 2/3 hours of use check the tension in the belts via the slots on the belt guard, there should be 5 mm play when 10kgf are applied.

CT Belt Adjustment



- To adjust the belt tension tighten or slacken the bolt **A** until the desired tension has been made
- Undo counter bolts **B** and raise or lower the gearbox in order to make the side shaft square with the side of the mower
- If the gearbox has been raised or lowered by quite a difference then the side shaft guard will need to be moved and made square. To do this slacken bolts **C** and move the guard up or down and then tighten **C**

XT YT Belt Adjustment



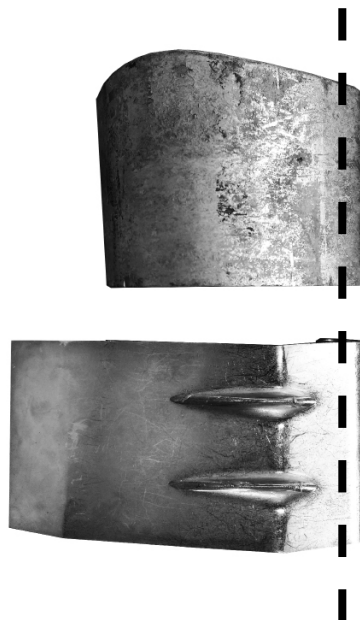
- Slacken bolts **D** which are situated inside the side shaft guard
- Adjust bolt **B** as desired in order to obtain the correct tension
- Via bolts **A** move the gearbox so that the side shaft is parallel to the ground and then tighten **A**
- Slacken **C** in order to manoeuvre the side shaft guard so that this too is parallel with the ground, then tighten **D** and **C**

Stone Guards

The front stone guards are very important for the protection of the tractor driver. Under no circumstances should the machine be used without the front stone guards. If the guards are bent, worn or broken they should be immediately replaced, failure to do so can result in severe injury and in certain cases can cause death.

The picture shows the comparison between a used worn and bent stone guard (top) and a new guard (bottom).

If the machine is properly set up, set at the correct height and the top tractor link is adjusted accordingly then the stone guards should be able to hang freely and not dig into the ground.



ALL MAINTENANCE MUST BE CARRIED OUT WITH THE TRACTOR OFF, P.T.O DISENGAGED AND THE MACHINE PROPERLY SUPPORTED. FAILURE TO DO SO CAN RESULT IN SERIOUS INJURY

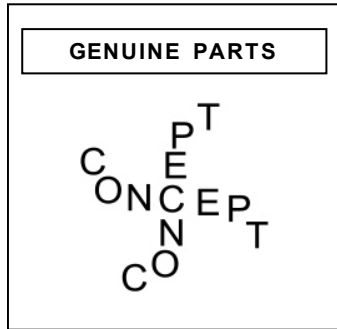
Storage

Before storing the flail mower after it's seasonal use it is recommended that a thorough check and clean is carried out. Remove all dirt and address any severely worn parts or broken parts. Treat any areas of the machine where the paint has worn off with a rust inhibitor and store in a dry place out of the elements to insure a longer life span. Grease the P.T.O shaft following the manufacturers recommendations.

Spare Parts

For the correct spare parts contact your local dealer and ensure that you have the all of the identification data and correct codes of the parts required.

Always use **genuine Concept spare parts**



THE USE OF NON GENUINE SPARE PARTS WILL NULLIFY THE WARRANTY

Warranty

During the warranty period the appropriate maintenance should be carried failure to do so will breach any cover necessary,

Concept Perugini S.R.L covers warranty with the exemption of wearing parts, providing that the fault is due to defects in workmanship or material and is in any way or to any extent not attributable to misuse, lack of reasonable care and general wear or to the fitting of spares, replacements or extra components which are not supplied or approved by Concept Perugini S.R.L. failure to comply will void warranty and should any problems a rise Concept Perugini S.R.L is not held responsible and is not required to answer to any warranty claims.

CONCEPT
FARM MACHINERY

PERUGINI
MADE IN ITALY